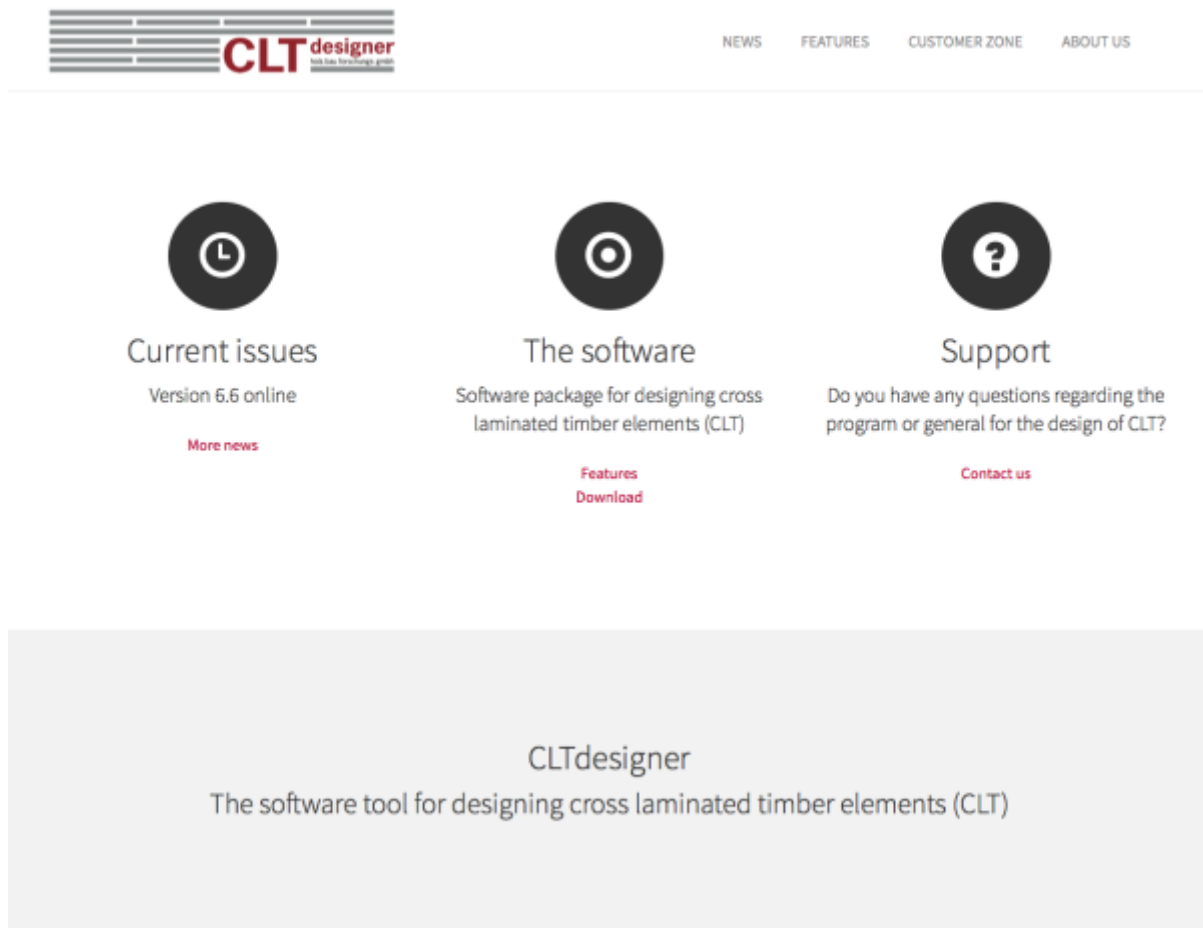


Instructions for download and installation


Registration

The registration for the use of the CLTdesigners has to be done via the website of the CLTdesigner (www.cltdesigner.at) under [Customer zone / Registration](#).



After successful registration and login on the website, the [Download](#) of the CLTdesigner can be started.

Download and first start of the program



NEWSFEATURESCUSTOMER ZONEABOUT US

CLTdesigner / Customer zone / Download

Login / Status

Registration

Newsletter subscription

Download

Download

To download the CLTdesigner you have to be logged in.

User login

Enter your username and password here in order to log in on the website:

Login

Username:

Password:

Login

[Forgot your password?](#)

[Not a member yet? click here to register.](#)

!

Information for users registered before launching the new homepage

The access data of the old homepage were not ported. Please register again.

i

Instructions for download and installation (BSP Wiki)

i

User manual (BSP Wiki)

After logging in, the program can be started by pressing the [Download link](#) and selecting open with the Java Web Start Launcher.

The installation of Java 8 is required. A free version of Java can be downloaded from www.java.com/download/.

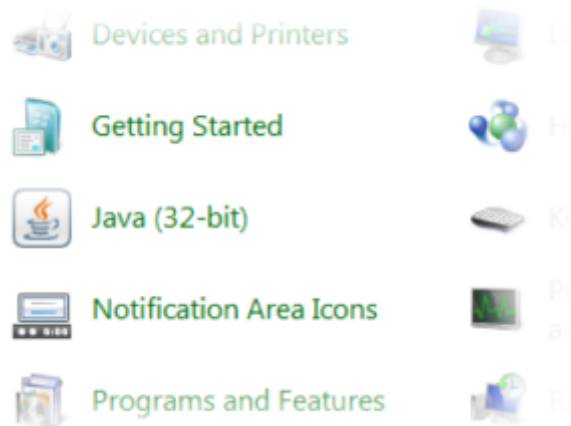
However, please note the changes regarding the Oracle Java license.

<https://www.bspwiki.at/>

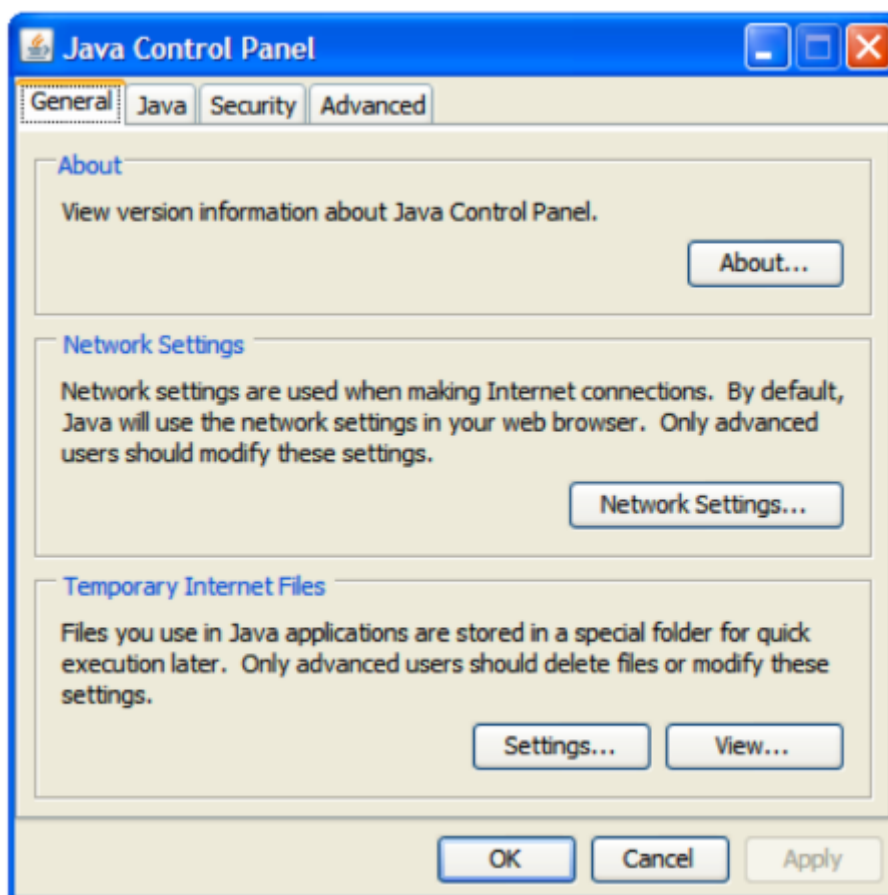
Printed on 2024/04/27 02:07

Restarting the program

It is unnecessary to restart the program via the website. In the control panel in Windows the option "Java" exists.



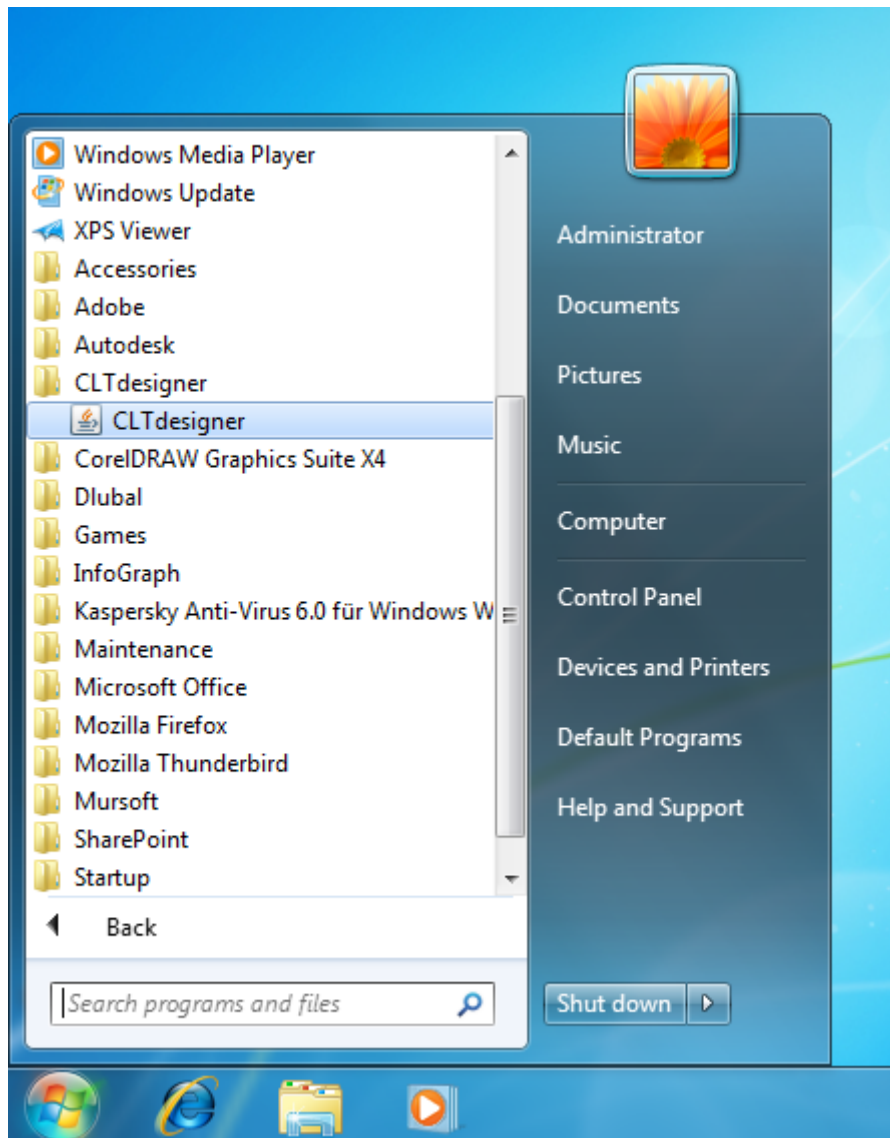
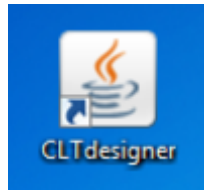
By clicking on it, the Java Control Panel is shown. Afterwards, let you show the "Temporary internet files" within the Java Control Panel.



By selecting the CLTdesigner in the Java Cache Viewer and by clicking on the green start button an online search for updates on the CLTdesigner is started. If an updated version is available, it is downloaded and the program is restarted.



By clicking on this button an icon is created on your desktop and in the item „All Programs“ within the start menu.



From:
<https://www.bspwiki.at/> - **BSP Wiki**

Permanent link:
<https://www.bspwiki.at/doku.php?id=en:clt:hotspot:software:cltdesigner:install>

Last update: **2020/08/25 15:39**

